

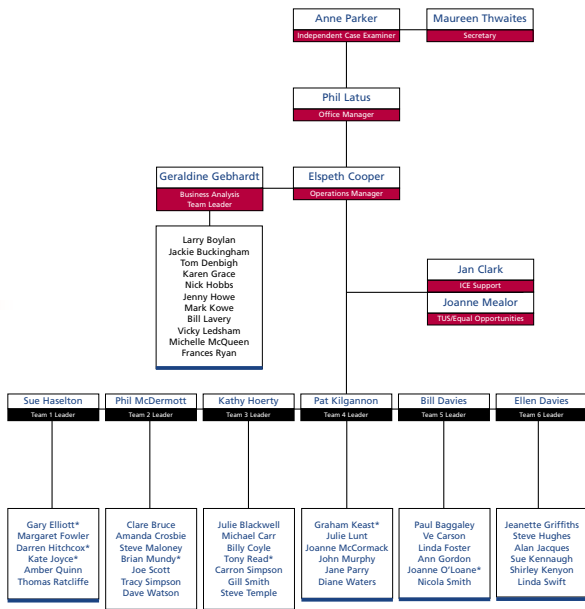


Annex D

Independent Case Examiner's office – organisation chart

- 1 Jan Clark
- 2 Phil Latus
- 3 Sue Haselton
- 4 Bill Davies
- 5 Kathy Hoerty
- 6 Ellen Davies
- 7 Joanne Mealor
- 8 Pat Kilgannon
- 9 Geraldine Gebhardt
- 10 Anne Parker
- 11 Phil McDermott
- 12 Elspeth Cooper





* secondees



If you would like additional copies of this annual report please contact:

The Office of the Independent Case Examiner
PO Box 155
Chester
CH99 9SA

Telephone: 0151 801 8800
Minicom: 0151 801 8888
Fax: 0151 801 8825
E-mail: ice@ukgov.demon.co.uk

Copies can also be obtained from our website at www.ind-case-exam.org.uk

Telephone calls can also be made at local call rate on: 0845 606 0777

Residents in Northern Ireland can write to us at:
The Office of the Independent Case Examiner
PO Box 1245
Belfast
BT2 7DF

This report is available in Welsh. The Welsh version is also available on the Internet.